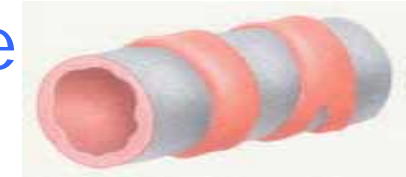
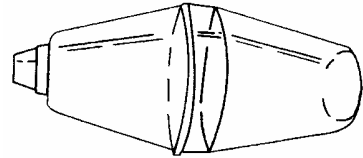
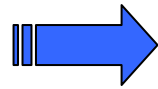


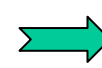
Traitement Crise Asthme et Gêne Respiratoire



Drs Scalbert-Dujardin et Delepouille, Centre hospitalier de Dunkerque

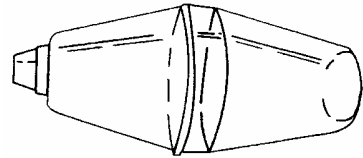


+ x 2

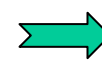


Ça va mieux !

⌚ Si je ne vais pas mieux 10 à 20 minutes plus tard

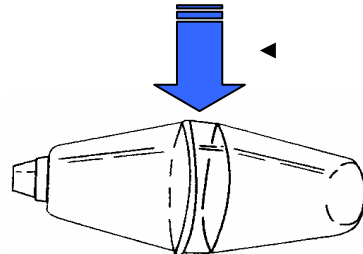


+ x 2



Ça va mieux !

⌚ Si je ne vais toujours pas mieux, 10 à 20 minutes plus tard




+ x 2



x 2



➤ Cortisone (Solupred ou Cortancyl) :  1 à 2 mg/kg (max: 60 mg)



➤ Appel médecin